

CSRS-PPP

(Processing Software Version: 1.04 1087)



Processing Summary for ARR21431.02o

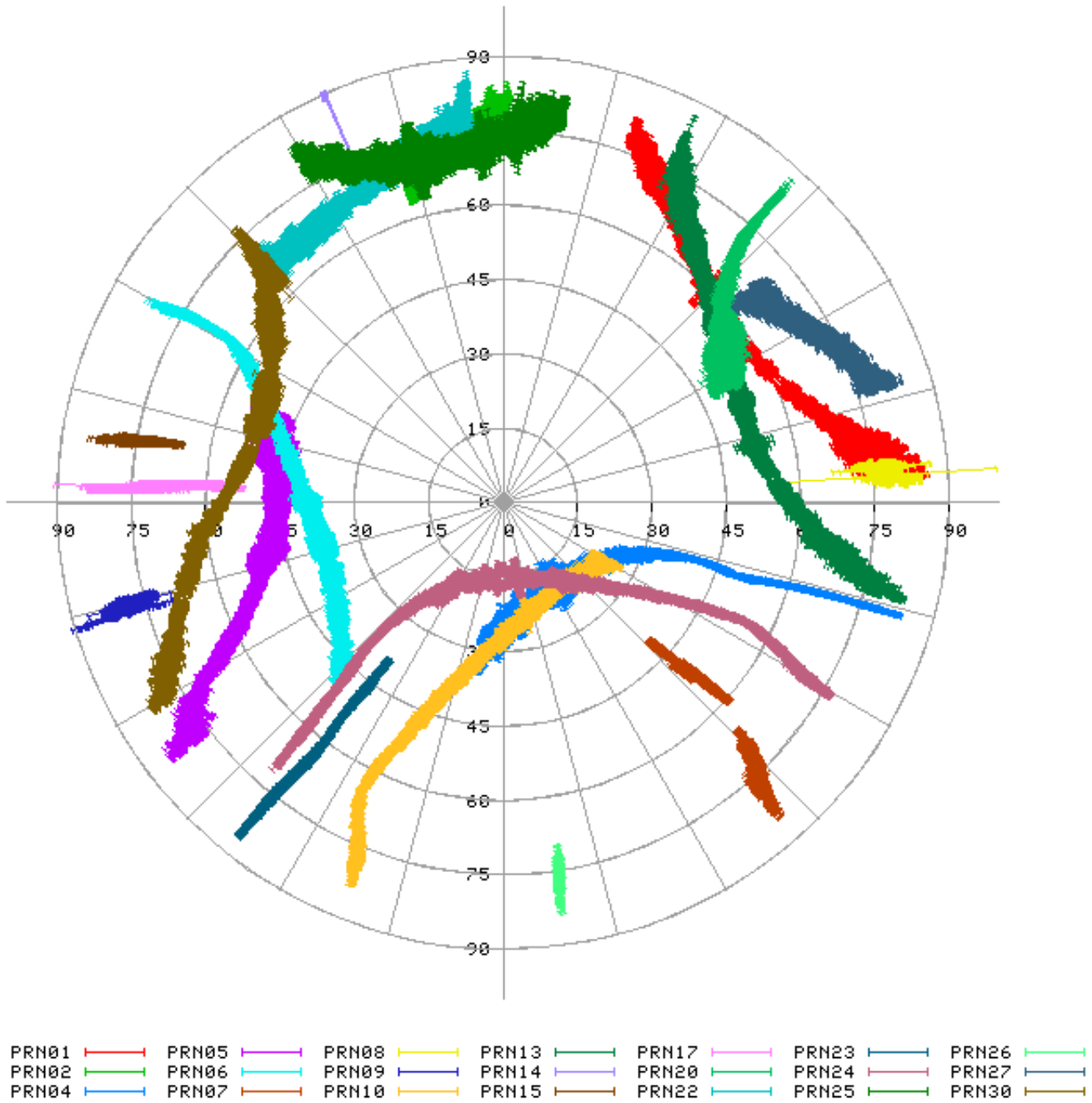
Data Start		Data End
2002-05-23 14:08:01.00		2002-05-23 18:41:30.00
Apri / Aposteriori Phase Std		Apri / Aposteriori Code Std
0.015m / 0.007m		2.0m / 1.287m
Observations	Frequency	Mode
Phase and Code	L1 and L2	Kinematic
Elevation Cut-Off	Rejected Epochs	Estimation Step
10.000 degrees	0.00 %	Same as Input RINEX File
Antenna Model	APC to ARP	ARP to Marker
Ball MciroStrip	Ant. not in PPP (0 m)	0.000 m

(APC = antenna phase center; ARP = antenna reference point)

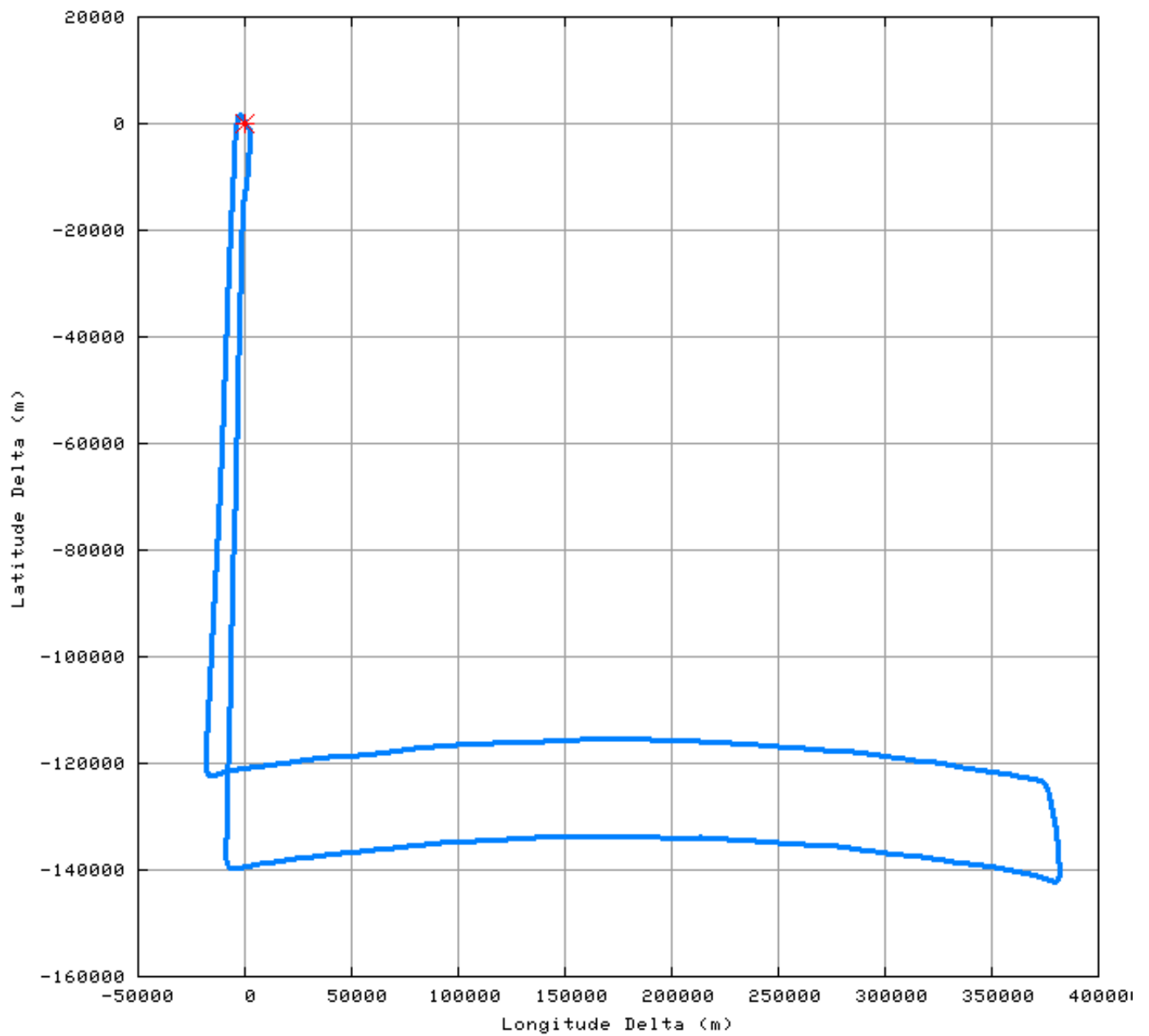
Estimated ITRF Positions for ARR21431.02o can be found in ARR21431.02o.pos file

Estimated Parameters & Observations Statistics

Pseudo-Range Residuals Sky Distribution

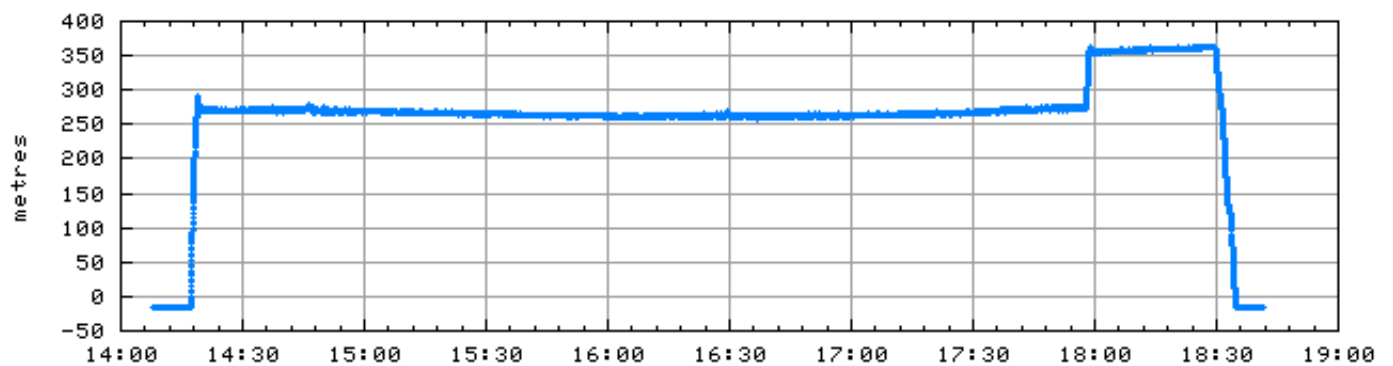


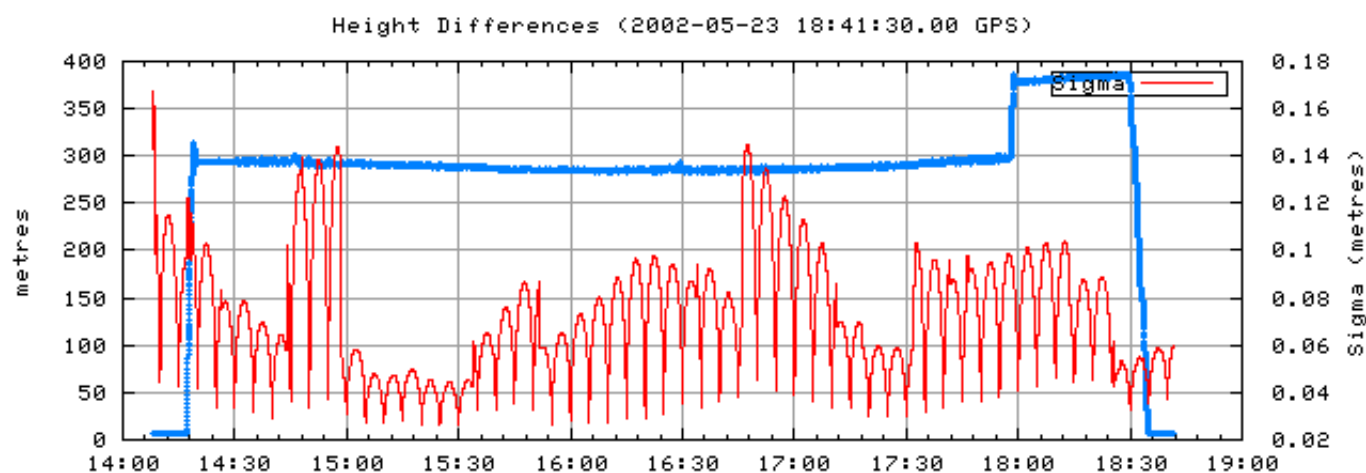
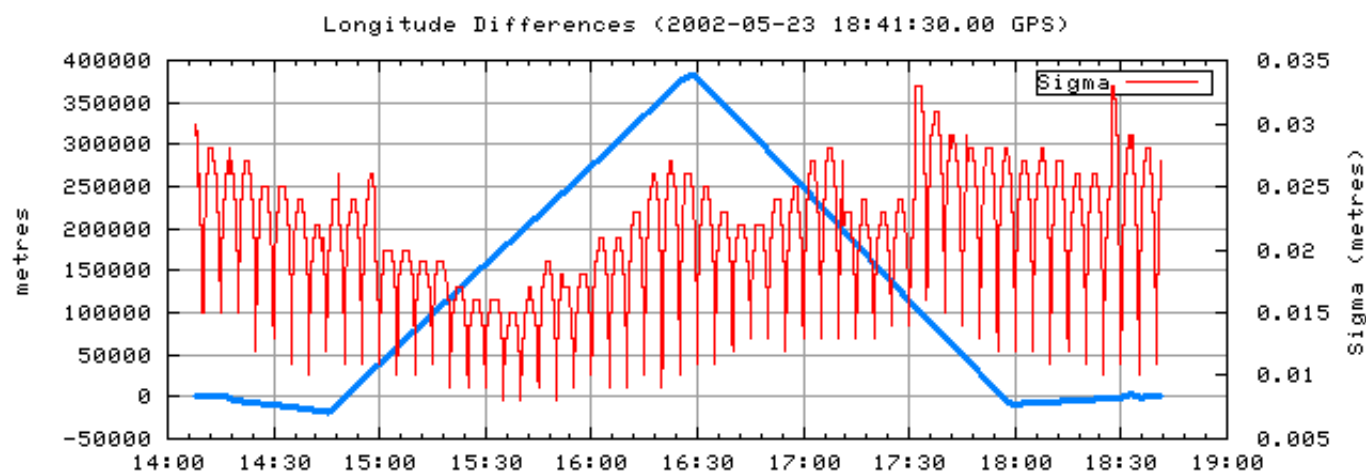
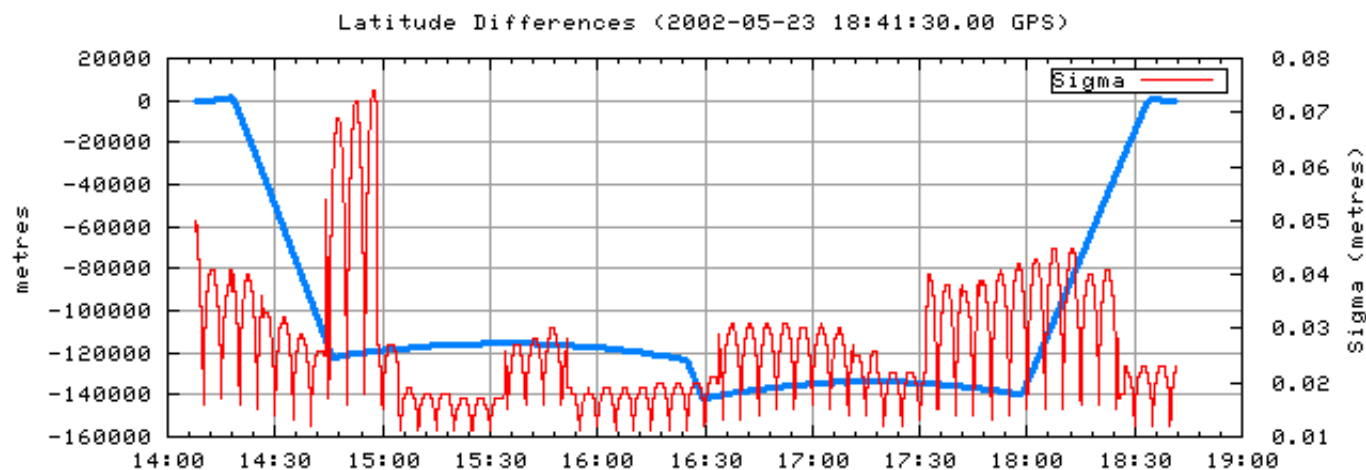
Displacement wrt Apriori Latitude (68 46 10.0500)
and Apriori Longitude (-81 13 33.1554)

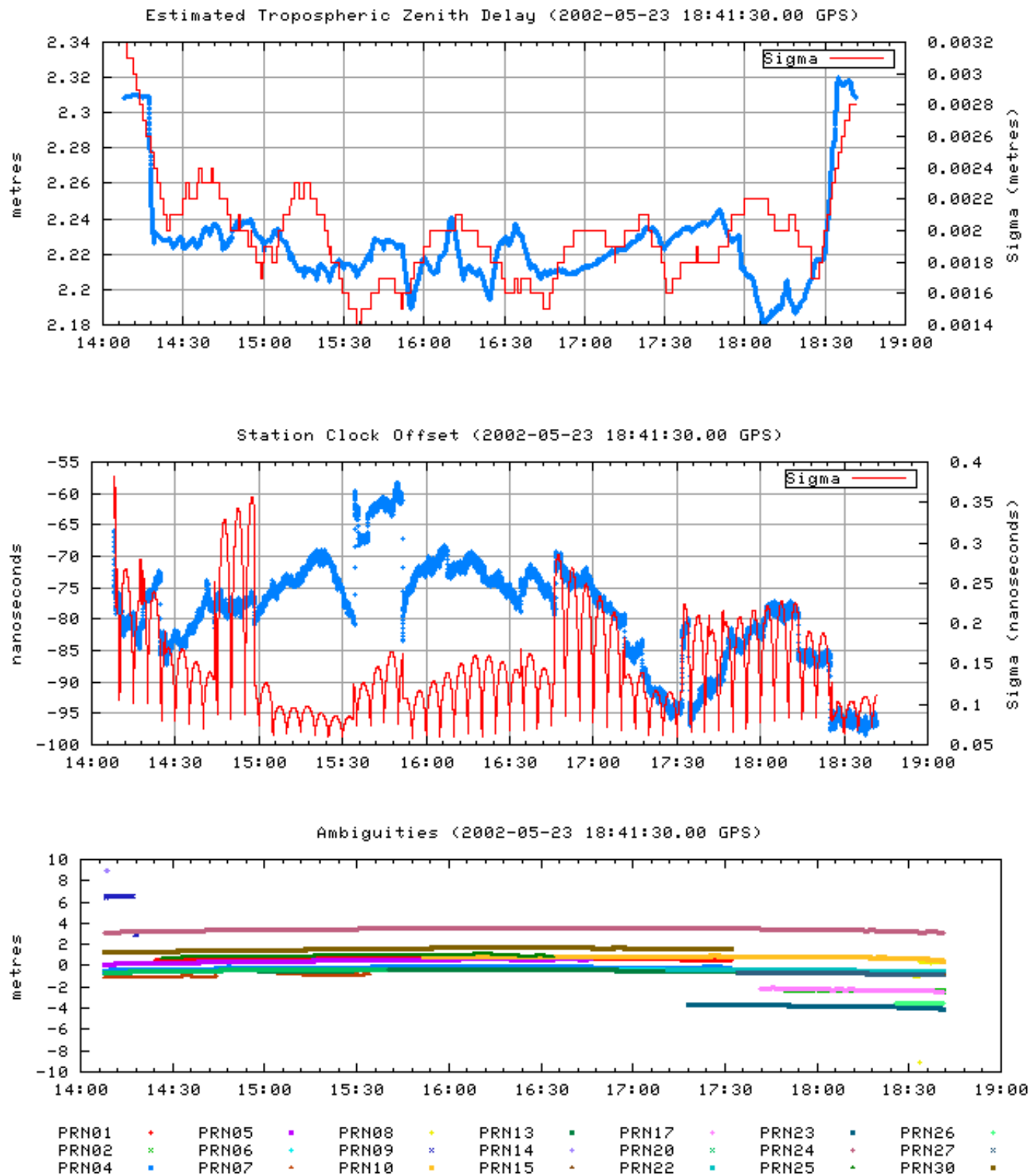


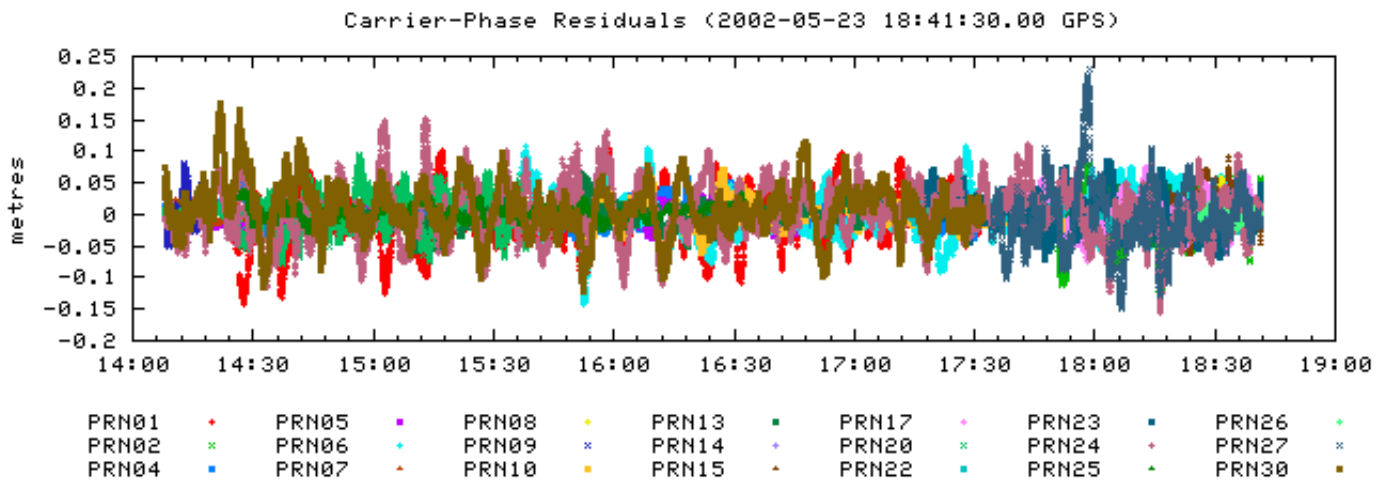
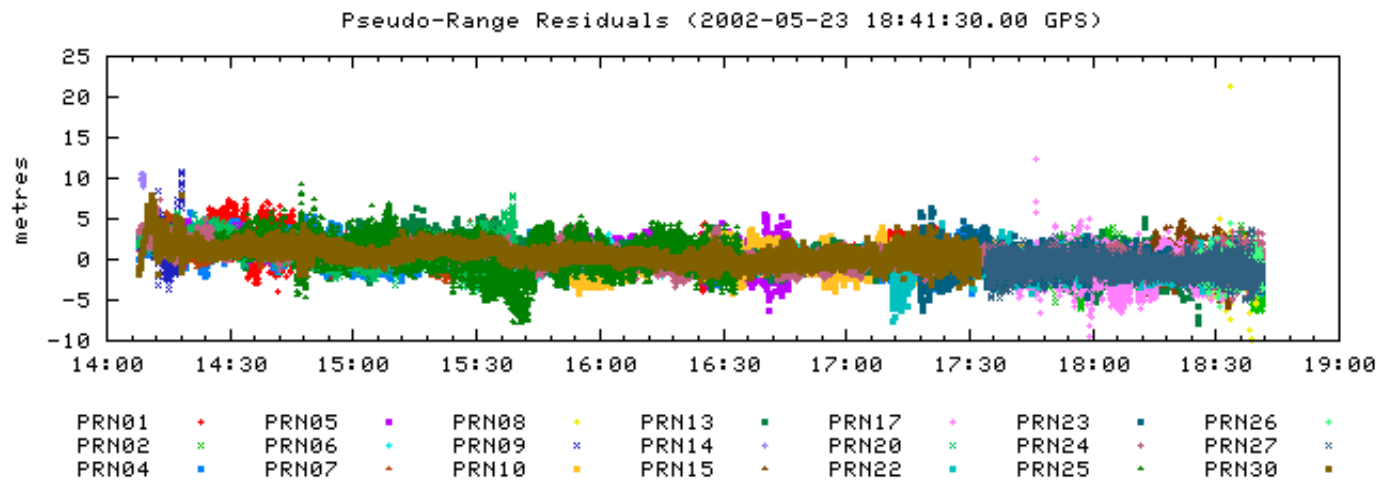
Initial Position X Final Position *

Ellipsoidal Height Profile (2002-05-23 18:41:30.00 GPS)









~~~ Disclaimer ~~~

Natural Resources Canada does not assume any liability deemed to have been caused directly or indirectly by any content of its PPP-On-Line positioning service.

If you have any questions, please feel free to contact:

**Geodetic Survey Division
Canada Centre for Remote Sensing
Natural Resources Canada
Government of Canada
615 Booth Street, Room 440
Ottawa, Ontario K1A 0E9
Phone:613-995-4410 FAX: 613-995-3215
EMail: information@geod.nrcan.gc.ca**



**Natural Resources
Canada**

**Ressources naturelles
Canada**

Canada